



# Tebbutts Yard

Earls Barton, Northamptonshire

oriordanbond  
SALES & LETTINGS

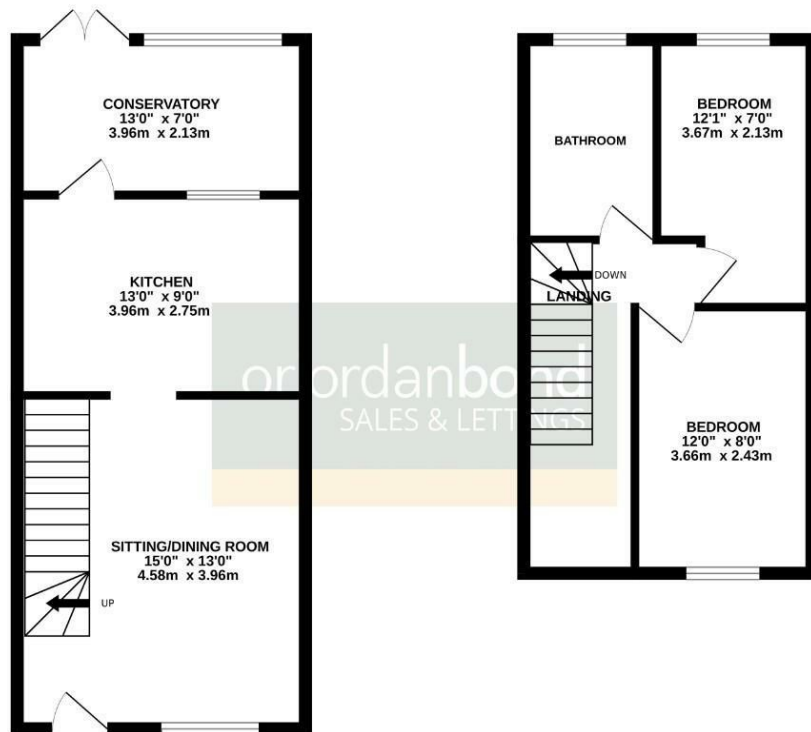




GROUND FLOOR



1ST FLOOR



TOTAL FLOOR AREA : 715 sq.ft (66.4 sq.m.) approx.  
While every attempt has been made to ensure the accuracy of the floorplan contained here, measurements of doors, windows, rooms and any other items are approximate and no responsibility is taken for any error, omission or mis-statement. This plan is for illustrative purposes only and should be used as such by any prospective purchaser. The services, systems and appliances shown have not been tested and no guarantee as to their operability or efficiency can be given.  
Made with Metreage 6/2025

## Tebbutts Yard

Earls Barton

NN6 0JN

PRICE £200,000

Located in the heart of the thriving village of Earls Barton is this spacious two bedroom cottage mews property offered for sale with no onward chain. We are delighted to offer for sale this lovely property located within a short walk into the heart of the sought after village of Earls Barton offering a wealth of amenities.

The accommodation comprises entrance into sitting/dining room with open plan stairs to first floor, a spacious kitchen with a wide range of fitted modern units with appliances, conservatory ideal for use as a separate dining room or further reception room, first floor landing, two double bedrooms and a re-fitted family bathroom. The property is located in a quiet no-through road with an enclosed courtyard garden to the rear. Further benefits include double glazing and gas radiator heating. (B/715/S)

### Additional information

- Council Tax Band: A
- Energy Efficiency Rating: C

### Viewing

Viewing strictly by appointment – details below

### Disclaimer

O'Riordan Bond Estate Agents Limited has not tested apparatus, equipment, fittings or services and so cannot verify they are in working order. The buyer is advised to obtain verification from their solicitor or surveyor.

O'Riordan Bond Earls Barton Sales

01604 810088

earlsbarton@oriordanbond.co.uk

